

DESIGN

ngland

...

➤ RICH MATERIALS FILL
THE MODERN HOUSE WITH
OLD-FASHIONED WARMTH

\$4.99 • DISPLAY UNTIL JAN. 4, 2011



A ROOM OF HER OWN • Space, views, and refined finishes combine to create a tranquil retreat for the lady of the house — the oversize closet was icing on the cake



SOMETIMES THE WAY TO SIMPLIFY YOUR LIFE IS to downsize. Sometimes, however, a little more space is what's needed to move us closer to Zen. Such was the case for a New Hampshire couple who, despite finding themselves in an empty nest, decided to expand their master suite from a bedroom, single bath, and walk-in closet to something akin to a separate apartment. (All that's missing is a kitchen.)

The wife in particular was longing for a closet/dressing room where she could keep all her clothes, shoes, bags, hats,

jewelry, and other accessories in a tidy, easy-to-find manner. She also wanted her own bathroom, one large enough to practice yoga on a floor heated with a radiant system. She got all of that and a separate whirlpool tub, oversize shower, an L-shaped vanity with a backlit mirror and soffit lighting, and a spectacular view of the Monadnock hills.

The architectural plan was the work of the Design Support Services group at Woodmeister Master Builders in

ARCHITECTURE/CONSTRUCTION: WOODMEISTER MASTER BUILDERS
 INTERIOR DESIGN: MEICHI PENG DESIGN STUDIO

THE LACQUERED CABINET at left softens the look of the room and holds books and bath accessories including a jar of imported soaps from Tour de France in Boston.



Design your dream

The BSA **Homeowner's Project Handbook** is your guide to finding, hiring and working with a Massachusetts architect or designer.

Visit architects.org/projecthandbook or call 617-951-1433 x221 to request a free copy.

Project by Hutker Architects
Photograph © Brian Vanden Brink

BSA Boston Society of Architects/AIA

bath |



THE SHOWER STALL is lined with marble tiles. The mirrored door leads to the wife's dressing room. The vanity (TOP) is framed by lacquered storage cabinets and is illuminated by vertical sconces, backlighting within the mirror, and fluorescent lighting in the soffit.

Holden, Massachusetts, a company the couple has worked with for nearly 20 years. Once the overall concept was approved, Boston interior designer Meichi Peng of Meichi Peng Design Studio stepped in to help select the finishes.

"We worked hand-in-hand with the client on the overall plan," says Stephen Sullivan, account manager for Woodmeister on the project. "Then we worked with Meichi to add the bells and whistles and fine-tune the layout. She provided the space with texture and flavor."

*Dedicated to Design and Function
Built on Maine Integrity*



INTRODUCING ARRIS —

- Sofa
- Chair
- Loveseat
- Ottoman

Huston & Company
FINE CUSTOM FURNITURE

Visit us online: www.hustonandcompany.com
Our Showroom: 226 Log Cabin Road, Kennebunkport, Maine / 888-869-6370



the bath expert

Billie
Brenner
Ltd

617.348.2858

Boston Design Center Suite 429

VITRAFORM



MEICHI PENG INCORPORATED some of the owner's favorite elements into the design such as the Dornbracht faucet set (TOP) and the spherical oil-rubbed bronze knobs used on the walnut vanity (ABOVE) and the drawers in the lacquered storage towers.

ROOMS
WITH A VIEW



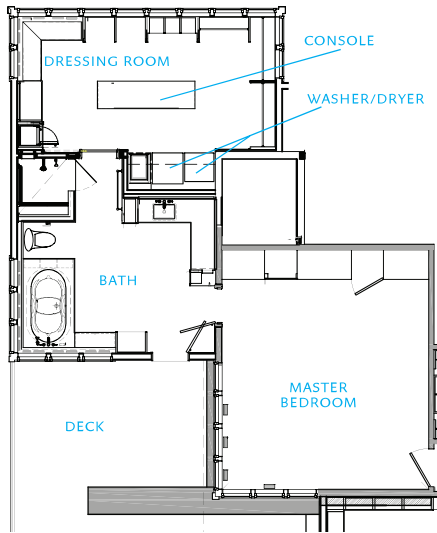
FINE IMPORTED TILE
STONE • CERAMIC
MARBLE • GLASS
INTERIOR DESIGN
& INSTALLATION

325 Ayer Road • Harvard, MA 01451
978-772-7022
www.roomswav.com



After meeting with the client to determine her likes and dislikes, Peng presented her with three options for palette and materials. "She chose the one that was most luxurious and had the most texture," says Peng. Soft gray marble sourced from three different companies and rich walnut are the foundations of the scheme. To that Peng added gray lacquer finishes for the two floor-to-ceiling towers of shelves and drawers at each end of the vanity and a wider tower on one wall used to store towels and other accessories.

"There is a very interesting grain to the stone," says Peng of the marble used in large slabs for the tub surround, pony walls of the shower, and the vanity countertop. A similar stone, cut into 12-by-24-inch rectangular tiles, was used for the floor, while smaller marble tiles line the inside shower walls.



THE EXPANDED MASTER SUITE includes “her” bath and a new dressing room that incorporates a center console for extra storage and a washer and dryer tucked into an alcove. The bathroom also has access to a private outdoor deck where, in good weather, the owner can practice yoga and enjoy the view.

At the client’s request, they used the same model of Dornbracht faucets that were in the original bath, which is now redone and the domain of her husband. “The line had been discontinued,” says Peng, who would not be deterred. “It took a while, but we found them for her.”

In the wash of soft muted grays, the walnut veneer on the tub plinth and the corner vanity anchors the room. The vanity mirror encompasses an entire corner and is fully backlit. Lighting sources also include long vertical sconces, and, a fully illuminated warm fluorescent soffit.

“Both teams really worked together on this project,” says Peng. “Woodmeister is very detail oriented, so it was a great collaboration.” With final touches made this fall, the homeowners are both happy. He has a refurbished bath to himself and has spread his shirts, shoes, and ties throughout the old walk-in closet. He also got an office/library and a shared sitting room.

She got everything she wanted just in time to enjoy the sweep of fall color on the gentle hills in the distance. In this tranquil space, what more could you ask? ■



LDa
ARCHITECTURE & INTERIORS

222 Third Street, Suite 3212
Cambridge, MA 02142
617 621-1455
www.LDa-Architects.com